



2012

BUYER'S GUIDE

Jeep WRANGLER



POWERTRAIN

Engine _____ 3.6L Pentastar® V6
 Displacement (cu in) _____ 219.9
 Horsepower (SAE @ rpm) _____ 285 @ 6,350
 Torque (SAE net lb-ft @ rpm) _____ 260 @ 4,200
 Axle Ratio (:1)
 6-speed manual _____ 3.21 Std., 3.73 Opt., 4.10 Std. — Rubicon
 5-speed automatic _____ 3.21 Std., 3.73 Opt. (Std. on Rubicon)
 Fuel System _____ Sequential multipoint, electronic fuel injection
 Transmission
 6-speed manual with overdrive, synchronized in all gears,
 multi-rail shift system with top-mounted shift lever _____ Std.
 5-speed automatic with overdrive clutch hydraulic
 actuation, Hill Descent Control,⁽²⁾ electronically controlled
 converter clutch _____ Opt. (Std. on right-hand-drive models)

ELECTRICAL SYSTEM

Alternator _____ 160 ampere
 Battery _____ 600 CCA, maintenance-free
 Fan _____ On-demand, pulse with modulated electric

FOUR-WHEEL-DRIVE SYSTEM (transfer case)

NV241 GII Command-Trac® (includes off-road skid plate), part-time,
 2-speed, with shift-on-the-fly, 2.72:1 low-gear ratio _ Std. — All 4x4
 models, except Rubicon
 NV241 OR Rock-Trac® (includes off-road skid plate), part-time,
 2-speed, with shift-on-the-fly, 4.0:1 low-gear ratio _ Std. — Rubicon

5 YEAR/100,000 MILE POWERTRAIN WARRANTY

WARRANTIES. Jeep® vehicles are covered by a 3-Year or 36,000-Mile Basic Limited Warranty (excludes normal maintenance and wear items), as well as a 5-Year or 100,000-Mile Powertrain Limited Warranty that is fully transferable. See your dealer for complete details and a copy of the 5-Year/100,000-Mile Powertrain Limited Warranty.



CHRYSLER SERVICE CONTRACTS.

Chrysler Group LLC has a vested interest in your satisfaction and overall owner experience. Chrysler Group Service Contracts offer extended service plans to help ensure you'll enjoy the adventure of Jeep life many years down the road. For details, see your Jeep dealer, call (800) 442-2666 or visit jeep.com/csc.



AUTOMOBILITY.

Chrysler Group LLC's Automobility program provides aftermarket reimbursement incentives on adaptive vehicle upfit equipment to help provide safe and reliable vehicle modifications, enhancing accessibility for all people. For more information, call (800) 255-9877 or visit chryslerautomobility.com.



JEOP MASTERCARD®. Earn 3 points on qualifying purchases made at Chrysler Group LLC dealerships, 2 points per \$1 on qualifying travel purchases and 1 point per \$1 on qualifying purchases everywhere else with the new Jeep MasterCard. Points may be redeemed at your local dealership for cash off your new or used vehicle, accessories, parts, or service — including your next oil change. Or choose from hundreds of other rewards, including travel, cash back to your account, merchandise, or gift cards.⁽⁸⁾ For more information or to apply, visit jeepcard.com.

This brochure is a publication of Chrysler Group LLC. All product illustrations and specifications are based upon current information at the time of publication approval. Chrysler Group LLC reserves the right to make changes from time to time, without notice or obligation, in prices, specifications, colors, materials, and to change or discontinue models, which are considered necessary to the purpose of product improvement or for reasons of design and/or marketing. Jeep, the Jeep grille, Wrangler, Command-Trac, Freedom Top, Mopar, Pentastar, Rock-Trac, Sentry Key, Trail Rated, Tru-Lok, and Uconnect are registered trademarks of Chrysler Group LLC. BFGoodrich is a registered trademark of Goodrich Corporation. Bluetooth is a registered trademark of Bluetooth SIG, Inc. Bridgestone and any Bridgestone products or service names are trademarks or registered. Dana and Trac-Lok are registered trademarks of Dana Corporation. Garmin and the Garmin logo are registered trademarks of Garmin, Ltd. or its subsidiaries and are registered in one or more countries, including the U.S. Goodyear is a registered trademark of Goodyear Tire & Rubber Company. ∞ Infinity is a trademark of Harman International Industries, Inc. MasterCard is a registered trademark of MasterCard International Incorporated. This card is issued by First Bankcard, a division of First National Bank of Omaha, pursuant to a license by MasterCard International Incorporated. SiriusXM and all related marks and logos are trademarks of SiriusXM Radio Inc. Sunrider is a registered trademark of Bestop, Inc.

⁽¹⁾The advanced front air bags in this vehicle are certified to the new U.S. federal regulations for advanced air bags. Children 12 years old and younger should always ride buckled up in a rear seat. Infants in rear-facing child restraints should never ride in the front seat of a vehicle with a passenger front air bag. All occupants should always wear their lap and shoulder belts properly. ⁽²⁾No system, no matter how sophisticated, can repeal the laws of physics or overcome careless driving actions. Performance is limited by available traction, which snow, ice, and other conditions can affect. When the ESC warning lamp flashes, the driver needs to use less throttle and adapt speed and driving behavior to prevailing road conditions. Always drive carefully, consistent with conditions. Always wear your seat belt. ⁽³⁾Be sure to follow all instructions in Owner's Manual for removal of top, doors and lowering of windshield. Driving with doors off and windshield down is for off-road use only. ⁽⁴⁾SiriusXM services require subscriptions, sold separately after 12-month trial included with vehicle purchase/lease. Subscriptions governed by SiriusXM Customer Agreement at siriusxm.com. If you decide to continue your SiriusXM service at the end of your complimentary trial, the plan you choose will automatically renew and bill at then-current rates until you call SiriusXM at 1-866-635-2349 to cancel. SiriusXM U.S. satellite service available only to those at least 18 years of age in the 48 contiguous United States and D.C., with Sirius also available in PR. Go to www.siriusxm.com/48 for available coverage. © 2011 SiriusXM Radio Inc. ⁽⁵⁾Phone must support Bluetooth Phone Book Access Profile (PBAP). ⁽⁶⁾Uconnect Web feature is not intended for use by the driver while the vehicle is in motion. Always drive carefully. Subscription required. ⁽⁷⁾Do not attempt water fording unless depth is known to be less than 20 inches. Traversing water can cause damage that may not be covered by the new vehicle warranty. Always off-road responsibly in approved areas. ⁽⁸⁾Complete details, including restrictions, limitations, and exclusions, will be available when you become a Cardmember.



Jeep

GET THE SCOOP ON ONE OF THE MOST CAPABLE VEHICLES ON EARTH. THIS GUIDE DETAILS ALL OF WRANGLER'S SPECIFICATIONS AS WELL AS STANDARD AND AVAILABLE FEATURES THAT ADD TO YOUR ADVENTURES. WHERE WILL YOUR WRANGLER TAKE YOU? IT'S UP TO YOU TO DISCOVER.

STANDARD FEATURES

SPORT **INCLUDES:** Pentastar® 3.6L V6 engine with 6-speed manual transmission, Command-Trac® 4WD system, Dana® 44 heavy-duty rear axle, Dana front axle, advanced multistage driver and front-passenger air bags,⁽¹⁾ antilock brake system (ABS), Electronic Stability Control (ESC),⁽²⁾ Hill Start Assist (HSA), Electronic Roll Mitigation (ERM), Sentry Key® anti-theft engine immobilizer, removable full-frame doors,⁽³⁾ skid plates (for fuel tank and transfer case), halogen headlamps and fog lamps, front and rear tow hooks, removable front air dam, Sunrider® Soft Top, Media Center 130 AM/FM/CD radio with MP3/WMA support and audio jack, monotone cloth seats, full center console with locking storage, reversible cargo mat with Jeep® logo, wash-out interior with removable carpet and drain plugs

SAHARA **INCLUDES EVERYTHING FROM SPORT PLUS:** Tubular side steps, body-color fender flares, Satin Silver bumper inserts, 18-inch cast aluminum wheels, seven ∞Infinity® speakers including subwoofer and 368-watt amplifier, SiriusXM™ Satellite Radio⁽⁴⁾ with one-year subscription included, soft-touch instrument panel, leather-wrapped steering wheel with speed/audio/available EVIC controls, Tip 'n Slide driver and front-passenger seats (on two-door models)

RUBICON **INCLUDES EVERYTHING FROM SAHARA PLUS:** Rock-Trac® 4WD system, Tru-Lok® front/rear locking differentials, front sway bar disconnect system, Dana 44 heavy-duty front and rear axles, high-pressure monotube shocks with low-speed tunable valve technology, heavy-duty suspension, 17-inch cast aluminum wheels with 32-inch BFGoodrich® Mud Terrain tires, seven ∞Infinity® speakers including subwoofer and 368-watt amplifier, SiriusXM Satellite Radio⁽⁴⁾ rock rails, leather-wrapped steering wheel with speed/audio/available EVIC controls

A note about this brochure: All disclaimers and disclosures can be found on the back cover. Be sure to follow instructions in Owner's Manual for removal of tops, doors, and lowering of windshield. Driving with doors off and windshield down is for off-road use only.

OPTIONS

	Wrangler			Wrangler Unlimited					
	Sport	Sahara	Rubicon	Sport	Sahara	RHD Rubicon			
	B	S	G	R	C	S	G	U	R
CAPABILITY									
Front Axle Dana® 30 solid front	•	•	•	•	•	•	•	•	•
Dana 44 heavy-duty solid front				•				•	
Axle Ratio 3.21:1	•	•	•	•	•	•			
3.73:1 (std. on Rubicon for 3.6L A5, optional on all others and packaged with Max Tow Package on 4DR)	B	B	B	•	B	B	•	•	
4.10:1 (std. on Rubicon for 3.6L M6 and optional for 3.6L A5)				•				•	
Differentials Trac-Lok® limited-slip rear		O	O		O	O	O	O	
Tru-Lok® front and rear, electronic remote locking				•				•	
Four-Wheel-Drive System Command-Trac® NV241 GII, manual, part-time, shift-on-the-fly transfer case	•	•	•	•	•	•	•	•	
Rock-Trac® NV241 OR, manual, part-time, shift-on-the-fly transfer case; 4:1 low-gear ratio				•				•	
Powertrain 3.6L V6 SMPI engine with 6-speed manual transmission	•	•	•	•	•	•	•	•	
Pentastar® 3.6L V6 SMPI engine with 5-speed automatic transmission	O	O	O	O	O	O	O	•	O
Rock Rails Black, painted steel, heavy-duty, protective				•				•	
Sway Bar Disconnect Electronically controlled, front				•				•	
Trailer Tow Group Includes Class II receiver hitch, four-pin adapter, Trailer Sway Control, ⁽²⁾ and 3.21:1 axle ratio.	O	O	O	O	O	O	O	O	O
Max Tow Package Includes Class II receiver hitch, four-pin adapter, Trailer Sway Control, ⁽²⁾ 3.73 axle ratio (or 4.10 if so equipped for Rubicon)							O	O	O
EXTERIOR									
Half Doors ⁽³⁾ Removable, half-framed metal with plastic windows (requires soft top, N/A with power windows/doors)		O		O	O	O			O
Fender Flares Black, molded-in-color	•	•	•	•	•	•	•	•	•
Body-color			•	O			•	O	
Glass Deep-tinted sunscreen rear and quarter		O	•	O	•	•	•	•	
Steps Tubular side steps, diamond plate surface pattern		O	•		O	•			
Tires P225/75R16 Goodyear® Wrangler ST, BSW on-/off-road	•			•			•		
P255/75R17 Goodyear Wrangler SR-A, OWL, on-/off-road	•			•			•		
P255/70R18 Bridgestone® Dueler A/T, OWL, on-/off-road				•			•		
LT255/75R17 BFGoodrich® Mud Terrain, BSW, off-road				•			•		
Tops Sunrider® folding soft top with sunroof feature	•	•	•	•	•	•	•	•	•
Freedom Top® three-piece modular hardtop with rear wiper/washer, rear defroster, full-framed doors and Freedom Panel storage bag	O	O	O	O	O	O	O	O	•
Body-color hardtop			O	O			O	O	
Dual Top Group, includes hardtop (Black or body color) and soft top	O	O	O		O	O		O	
INTERIOR									
115-Volt Outlet To power household items, laptops (12-volt power outlet standard on all models)		•	•		•	•		•	•
Air Conditioning Manual temperature controls	O	•	•	•	•	•	•	•	•
Automatic temperature controls		O	O		O	O		O	O
Heated Front Seats Included with leather trim		B	B		B	B		B	B
Lighting Rear cargo with on/off switch				•	•	•	•	•	•
Remote Start System Integrated key fob controls (requires Power Convenience Group and automatic transmission)	O	O			O	O		O	O

• = Included.
O = Optional.
P = Available within package noted.
B = Both optional and available within a package.

	Wrangler			Wrangler Unlimited					
	Sport	Sahara	Rubicon	Sport	Sahara	RHD Rubicon			
	B	S	G	R	C	S	G	U	R
INTERIOR (continued)									
Seating Leather-trimmed, monotone				O	O		O	O	
Rear — Fold and Tumble seatback, removable	•	•	•	•					
Split-folding with self-articulating outboard head restraints						•	•	•	•
Steering Wheel Leather-wrapped, with speed control (included with Connectivity Group)	O	P	•	•	O	P	•	•	•
SAFETY AND SECURITY									
Air Bags ⁽¹⁾ Supplemental front-seat mounted side		O	O	O		O	O		O
Hill Descent Control (included with 5-speed automatic transmission)	P	P	P	P	P	P	P	•	P
UCONNECT®									
Media Center 430N AM/FM radio, CD/DVD/MP3, audio jack, 40GB HDD (28GB available), USB port, 6.5-inch touch screen, steering wheel music controls, Garmin® Navigation, SiriusXM™ Satellite Radio, ⁽⁴⁾ and SiriusXM Travel Link™ ⁽⁴⁾ with one-year trial included. Optional: Bluetooth® streaming audio, additional USB ports				O	O		O	O	
Media Center 730N AM/FM radio, CD/DVD/MP3, audio jack, 40GB HDD (20GB available), USB port, Uconnect Voice Command with Bluetooth, Bluetooth streaming audio, additional USB port, 6.5-inch touch screen, steering wheel music controls, enhanced GPS navigation, SiriusXM Satellite Radio, ⁽⁴⁾ SiriusXM Travel Link, ⁽⁴⁾ and SiriusXM Traffic™ ⁽⁴⁾ with one-year trial included				O	O		O	O	
Audio Systems Six speakers	•	•		•	•	•		•	
Seven ∞Infinity® speakers with subwoofer and 368-watt amplifier		O	•	•	O	O	•	•	
SiriusXM Satellite Radio ⁽⁴⁾ Includes one-year subscription	O	O	•	•	O	O	•	•	
Uconnect Voice Command Hands-free calling with address book ⁽⁵⁾ and Bluetooth	P	P	P	P	P	P	P	P	P
Uconnect Web ⁽⁶⁾ Internet connection and WiFi Hotspot. Dealer-installed Authentic Jeep® Accessory by Mopar®. Subscription required; sold separately	O	O	O	O	O	O	O	O	O
PACKAGES									
Black Appearance Group Includes Black Tubular Side Steps, Black Fuel Filler Door, and Black Taillamp Guards (Authentic Jeep Accessories by Mopar)		O	O		O	O		O	O
Chrome Edition Group Includes Chrome Tubular Side Steps, Chrome Exhaust Tip, Chrome Fuel Filler Door, and Chrome Taillamp Guards (not available with Black Appearance Group) (Authentic Jeep Accessories by Mopar)	O	O	O		O	O	O	O	O
Connectivity Group Includes Electronic Vehicle Information Center (EVIC), Uconnect Voice Command, and leather-wrapped steering wheel	O	O	O	O	O	O	O	O	O
Power Convenience Group Power locks, power heated mirrors, power windows with front one-touch-down operation, remote keyless entry, and security alarm (requires full-framed doors)		O	•	O		•	•	•	•
Premium Chrome Group Includes Chrome Exterior Mirror Caps and Chrome Grille (requires Chrome Edition Group) (Authentic Jeep Accessories by Mopar)	O	O	O		O	O	O	O	O
Smoker's Group Removable ashtray and lighter element	O	O	O	O	O	O	O	O	O

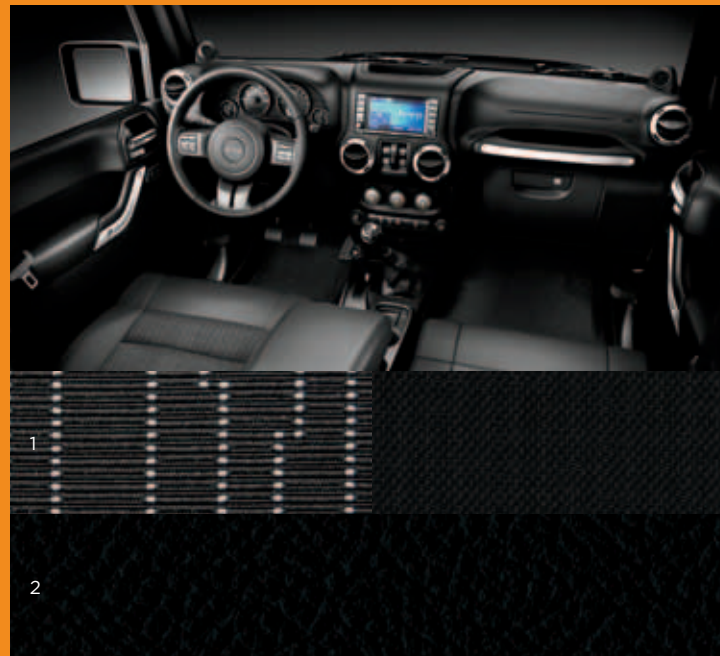


COLORS

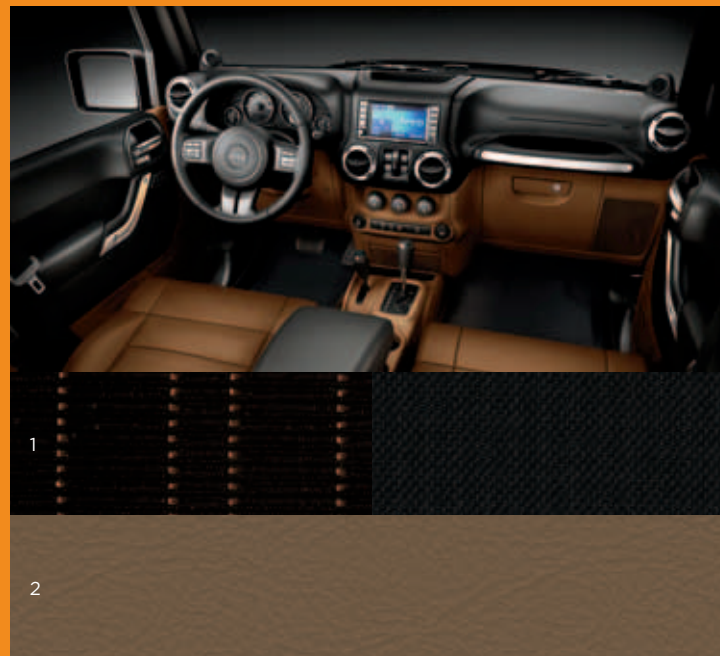


- 1 Deep Cherry Red
Crystal Pearl
- 2 Flame Red
- 3 Dozer
- 4 Crush
- 5 Gecko
- 6 Sahara Tan
- 7 Winter Chill Pearl
- 8 Bright Silver
Metallic
- 9 Black Forest Green
Pearl
- 10 Black
- 11 Bright White
- 12 Cosmos Blue

INTERIOR TRIM

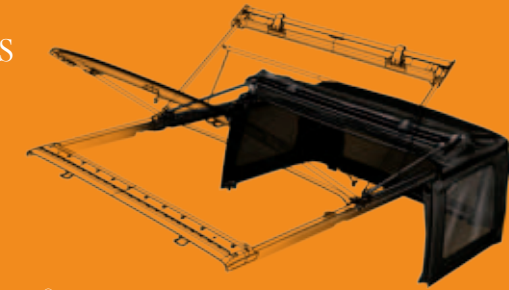


- 1 Tectonic/Wallace II Cloth — Black includes a Black monotone interior (standard on all models).
- 2 McKinley Leather Trim — Black with accent stitching includes a Black monotone interior (available on Rubicon and Sahara).



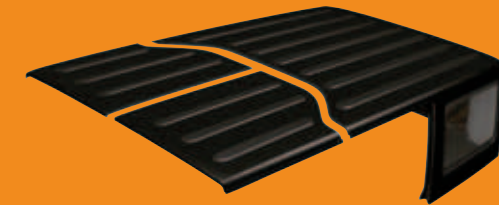
- 1 Tectonic/Wallace II Cloth — Dark Saddle/Black two-tone includes a two-tone Black/Dark Saddle interior (available on Rubicon and Sahara).
- 2 McKinley Leather Trim — Dark Saddle with accent stitching includes a two-tone Black/Dark Saddle interior (available on Rubicon and Sahara).

TOPS



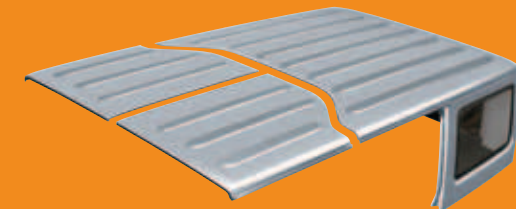
SUNRIDER® SOFT TOP.

Utilizes a special three-ply material that is quiet, watertight, and easy to fold and tuck away. The exclusive Sunrider Soft Top in Black is standard on all Wrangler models.



FREEDOM TOP® HARDTOP.

Strong and secure ride. Enjoy the best of both hardtop and soft top worlds when you choose the DualTop Group (available on Wrangler and Wrangler Unlimited in Black).



AVAILABLE COLOR-KEYED FREEDOM TOP HARDTOP.

Now you can match the color of your hardtop to the body color of your Sahara, Sahara Unlimited, Rubicon, or Rubicon Unlimited.

DOORS



FULL-FRAMED DOORS.

Removable,⁽³⁾ with roll-up windows and available power windows and door locks. Map pockets with mesh net to ensure wash-out capability. Aluminum-forged hinges are used on both Wrangler and Wrangler Unlimited (standard on all models).



HALF-FRAMED DOORS.

Removable,⁽³⁾ and feature manual locks. You can remove the doors completely for the ultimate in open-air freedom (available on Sport and Rubicon models).



BADGE OF HONOR.

Jeep® Trail Rated® vehicles are designed to tackle challenges like true off-road warriors. They perform to rigorous standards in five performance categories: Articulation, Traction, Maneuverability, Ground Clearance, and Water Fording.⁽⁷⁾ Visit jeep.com to learn more about the superior capabilities behind the badge.

DIMENSIONS

EXTERIOR

(2-door/4-door Rubicon model. Inches unless otherwise specified)

- 1 Wheelbase _____ 95.4/116.0
- 2 Overall Length _____ 164.2/184.8
- 3 Overall Width _____ 73.9
- 4 Track _____ 61.9
- 5 Height _____ 73.5/73.7
- 6 Ground Clearance (at curb weight) _____ 10.0
- 7 Approach Angle _____ 42.2°
- 8 Breakover Angle _____ 25.8°/21.0°
- 9 Departure Angle _____ 32.1°
- 10 Water Fording Depth⁽⁷⁾ _____ 20.0

RAMPTRAVEL INDEX (RTI)

(20-degree ramp. Sway bar connected/disconnected)

Rubicon _____ 638/822
 Unlimited Rubicon _____ 484/644

INTERIOR

(2-door/4-door models. Inches unless otherwise specified)

Seating Capacity
 2-door front/rear _____ 2/2
 4-door front/rear _____ 2/3

Head Room

front _____ 42.1/42.3
 rear _____ 40.8/41.7

Leg Room

front _____ 40.9
 rear _____ 34.6/36.3

Shoulder Room

front _____ 55.8
 rear _____ 59.6/55.8

Hip Room

front _____ 53.2
 rear _____ 43.3/54.1

Front-Seat Travel

_____ 9.4

Front-Seat Volume Index

(cubic feet) (min.) _____ 55.6

Rear-Seat Volume Index

(cubic feet) _____ 44.2/48.6

Cargo Volume (cubic feet)

rear seat folded _____ 55.0/70.6

behind rear seat _____ 12.8/31.5

Cargo Lifterover Height

_____ 30.5/30.8

Jeep WRANGLER



CAPACITIES/WEIGHTS/TOWING (4WD)

(2-door/4-door. Pounds unless otherwise specified)

Fuel Tank (includes off-road skid plate) (gal) _____ 18.6/22.5
 Base Curb Weight, 4WD _____ 3,849/4,231
 Payload Capacity (all occupants and cargo) _____ 1,000
 Maximum Gross Vehicle Weight Rating (when properly equipped) _____ 5,000/5,500
 Towing Capacity
 2-door/4-door (w/Trailer Tow Group) _____ 2,000
 4-door (w/Max Tow Package) _____ 3,500
 Tongue Load Limit _____ 350

BODY/SUSPENSION/CHASSIS (2-door/4-door)

Body Design: Boxed steel frame with crushable, hydroformed front rail tips

Suspension: Live solid axles, 5-link front/rear, coil springs, leading arms, track/stabilizer bars and front steering damper

Steering Type _____ Power, recirculating ball with damper

Turns (lock-to-lock) _____ 3.5/3.1

Turning Diameter (curb-to-curb, with P225/75R16 tires) (ft) _____ 34.3/ 40.1

Brake System: 4-wheel disc hydraulic, power-assisted, 11.9" front/12.4" solid rear

GEAR RATIO/CRAWL RATIO (manual transmission, standard axle ratio)

Model	First Gear	Transfer Case (4LO)	Axle	Crawl
Rubicon	4.46	4.00	4.10	73.1
Unlimited Rubicon	4.46	4.00	4.10	73.1
Sahara	4.46	2.72	3.21	38.9
Unlimited Sahara	4.46	2.72	3.21	38.9
Sport	4.46	2.72	3.21	38.9
Unlimited Sport	4.46	2.72	3.21	38.9

WHEELS



17-inch Moab Cast Aluminum Painted Satin Carbon (Standard on Rubicon and Unlimited Rubicon)



18-inch Polished Aluminum (Optional on Sahara)



18-inch Gladiator Cast Aluminum Painted Satin Silver (Standard on Sahara and Unlimited Sahara)



17-inch Moab Cast Aluminum Painted Sparkle Silver (Available on Sport and Unlimited Sport)



16-inch Slot Spoke Steel Painted Argent (Standard on Sport, Unlimited Sport, and Unlimited Right-Hand Drive)